

.lt reached 100 000 domains

KTU ITPI, domreg.lt

2009-04-06

KTU ITPI, the .lt domain registry, is proud to announce the milestone of 100 000 registered .lt domains.

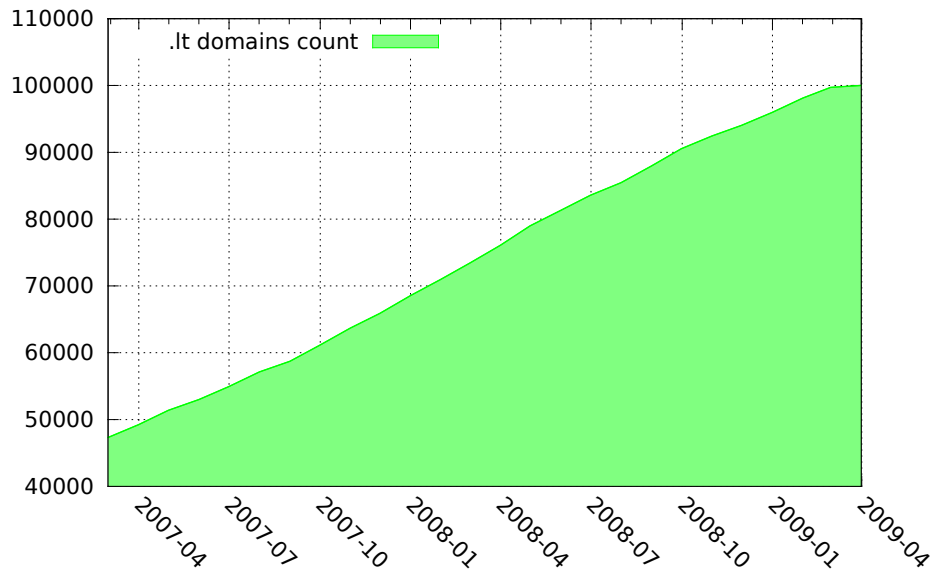


Figure 1: .lt domains count

On 2007-03-13 KTU ITPI has deployed its new automated system, a bit over two years later domain count has grown more than 220% (starting from 45125). Figure 1 shows growth of registered .lt domains in detail.

Share of .lt domains registered by natural persons has grown and is currently at about 40% (a year ago it was around 30%), this might be considered as an indication of more general public interest in owning .lt domain (for personal sites, blogs or personalized email addresses).

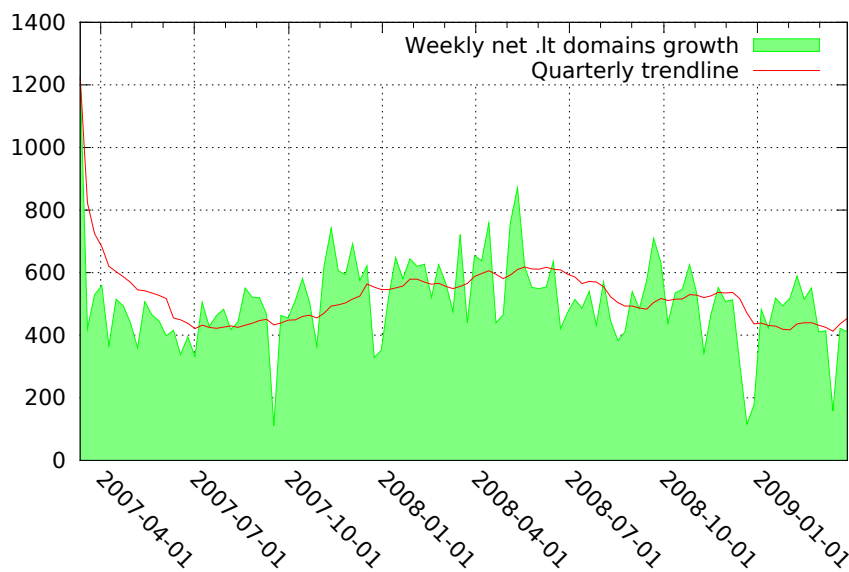


Figure 2: weekly net .lt domains growth

Weekly net .lt domain count growth shows a constant growth of about 400-500 .lt domains per week. Visible drop in graph was during 2008 holiday season.

To view dynamics of .lt domain transfers (registrar changes) and trades (registrant changes) we've plotted transfers and trades graphs (Figures 3 and 4).

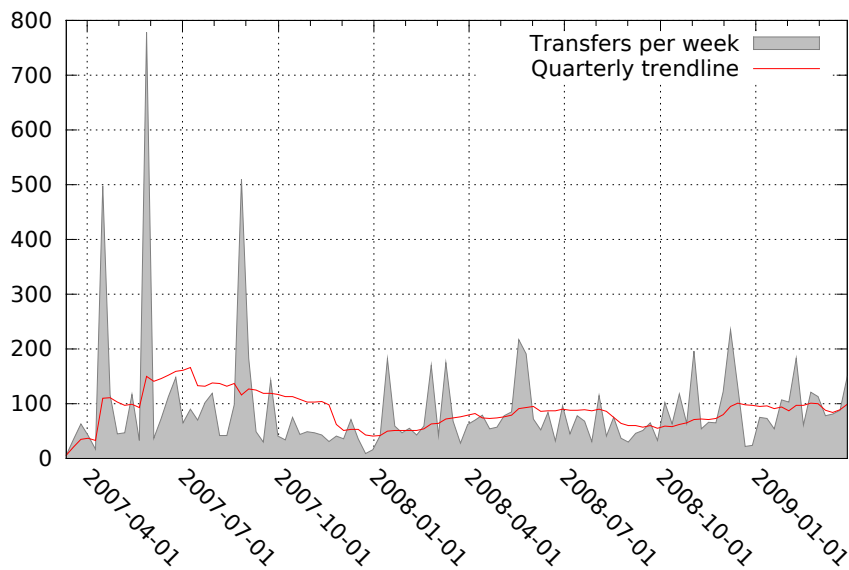


Figure 3: Domain transfer operations per week

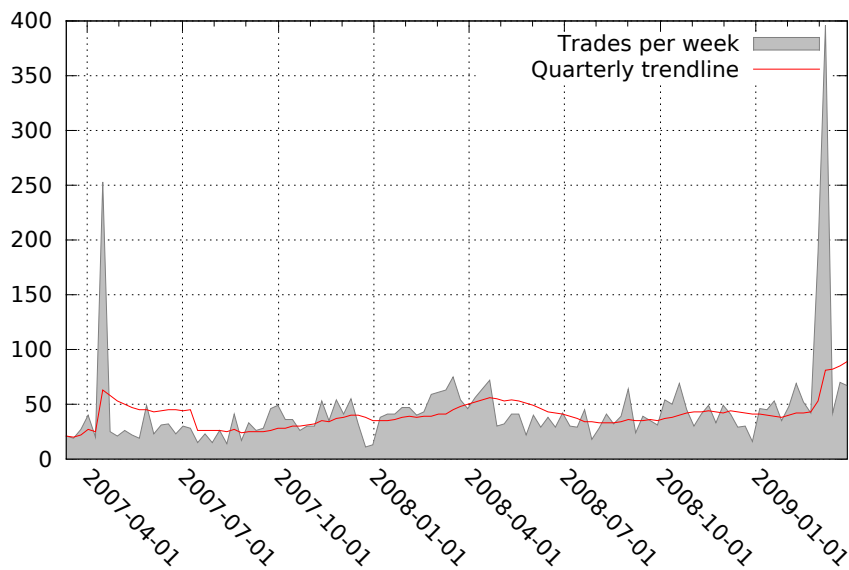


Figure 4: Domain trade operations per week

We see a rather constant rate of transfers and trades (at about 100, 50 domains per week respectively). The peak of trades at the beginning of the 2009 March, indicates a bigger domain portfolios trades, mostly domains registered right after new system launch on 2007-03-13.

Figures 5 and 6 show a detailed view of new domains registration and deletion trends. Deletions per week were averaging below 100 till 2008, but have grown to more than 200 in 2009.

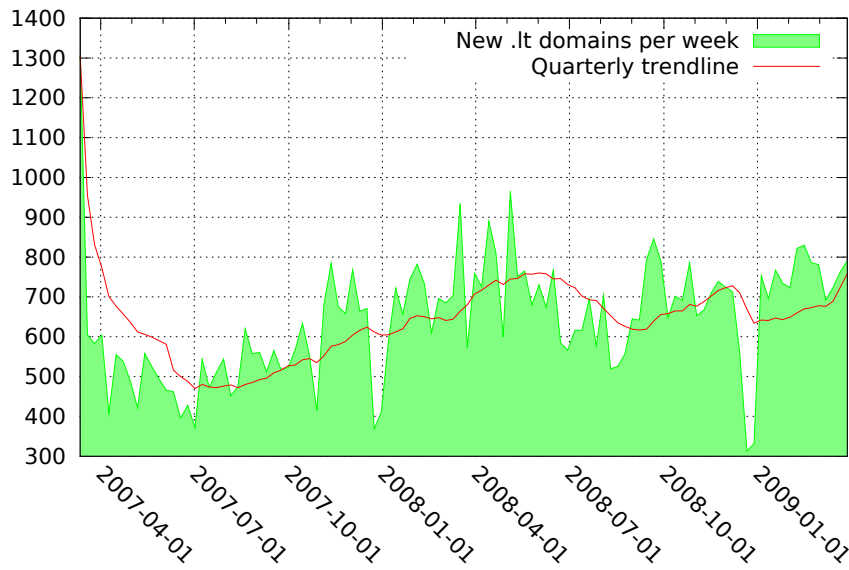


Figure 5: new .lt domains per week

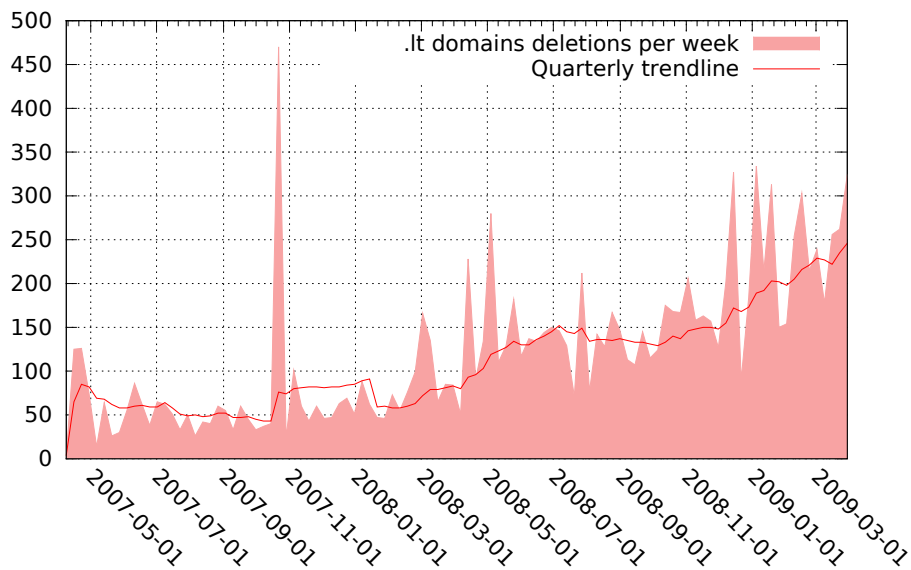


Figure 6: .lt domains deletions per week

Quarantine (period of thirty days after domain cancellation during which prior registrant has exclusive right to restore domain name) was introduced with new "Procedural regulation for the .lt top-level domain" on 2007-03-13. Before that, cancelled domains were immediately available for registration on "first come, first served" basis. Figure 7 shows percentage of .lt domains in quarantine, starting from 0% (when quarantine was introduced) it has grown to nearly 2% (e.g. we had around 2000 domains in quarantine when number of registered reached 100 000).

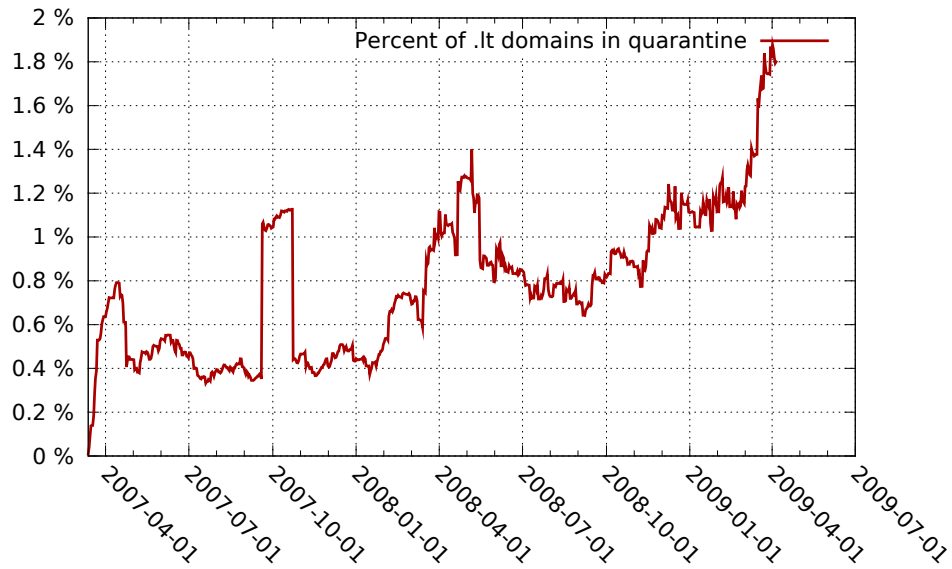


Figure 7: Percent of .lt domains in quarantine

To see what happens with cancelled domains, we've analysed re-registrations rate. Figure 8 shows registration percentage of cancelled domains (for which quarantine period ended). We considered domain re-registered, if it was registered no later than 48 hours since its availability.

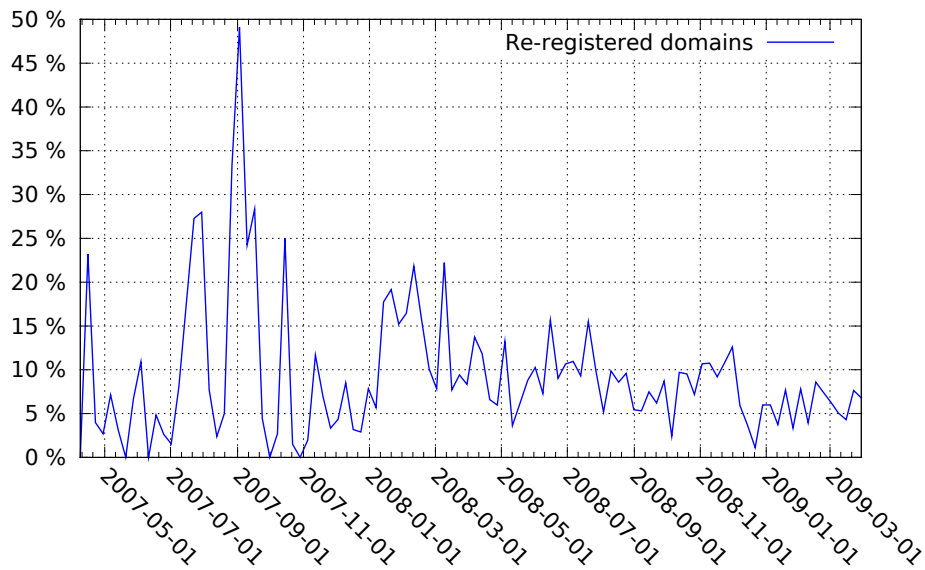


Figure 8: Re-registration of cancelled domain names

Since most (nearly 90%) .lt domains are registered by Lithuania residents or local legal entities, we've decided to further detail this statistic and calculated domain registrants distribution by Lithuania Counties. Figure 9 shows percentage of domains in each county. It comes to no surprise that Vilnius county is most active, followed by Kaunas and Klaipėda: according to Lithuanian statistics departments report "Population by County" (2009-01-01) these are three most populated counties in Lithuania.

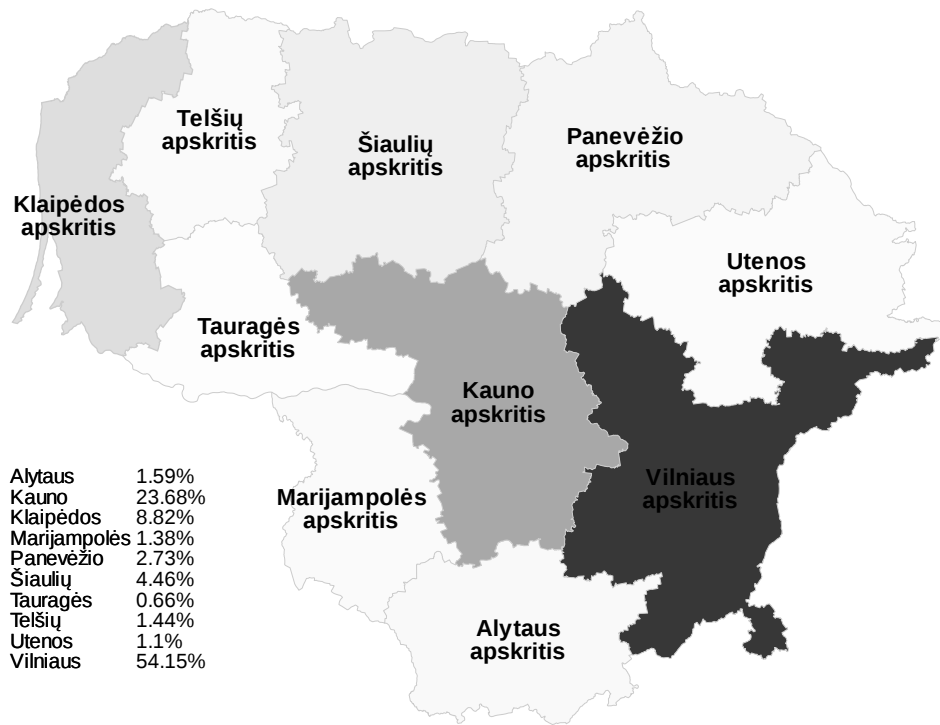


Figure 9: .lt domains by Lithuania Counties

Figure 10 shows percentage growth of registered .lt domains, since we have a rather constant net growth, percentage growth is slowly declining to around 1.5% per month.

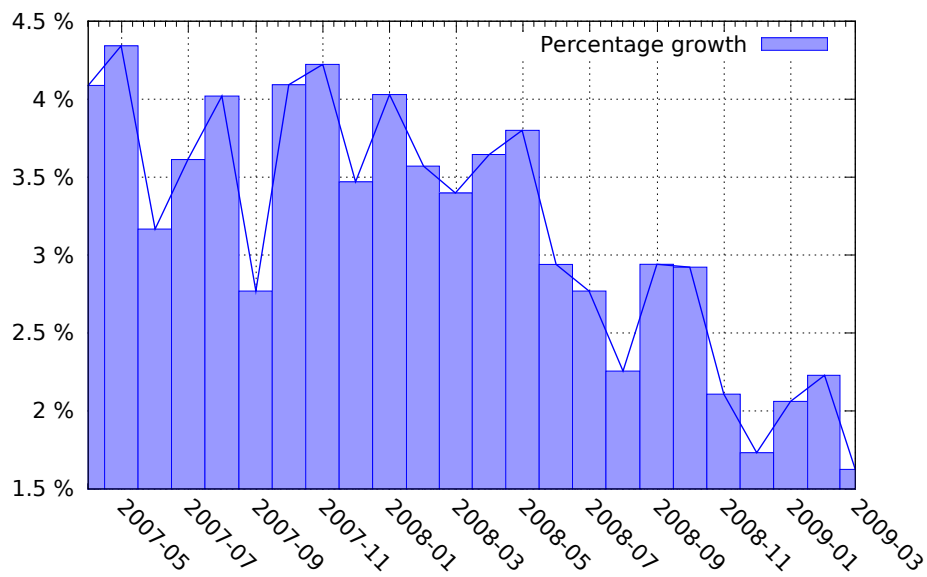


Figure 10: .lt domains monthly growth percentage