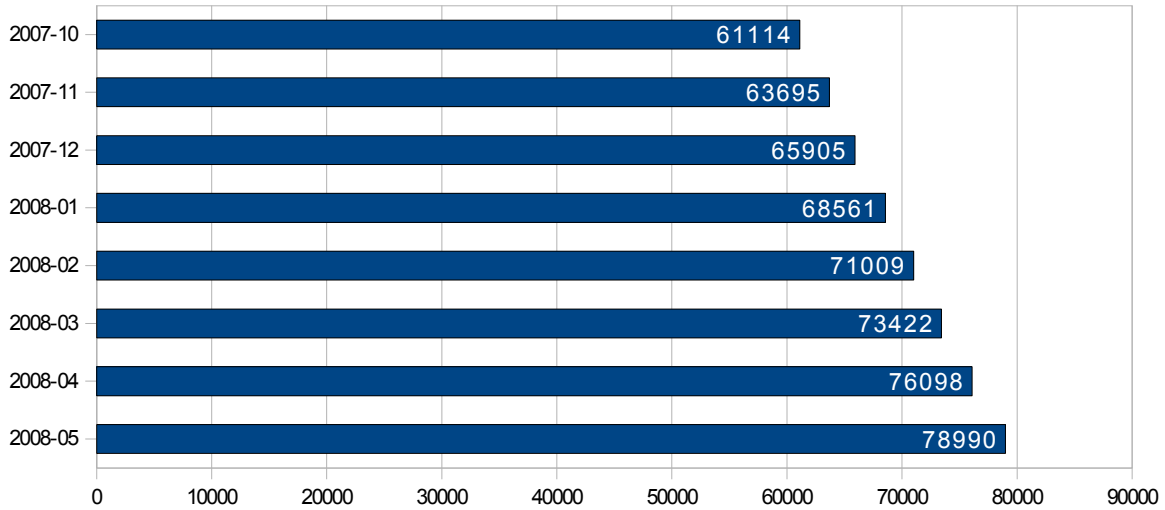


.It Registrations exceed 80,000

Number of registered .It domains have reached 80000 on 2008-06-13. Average number of .It domain registrations everyday (including weekends) is now more than 117.

Number of registered .It domains each month

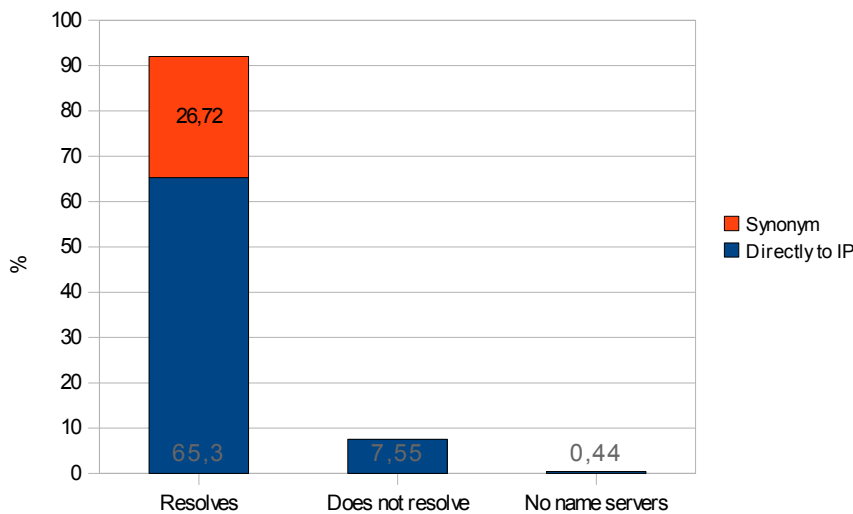


Statistics since 60 000 .It domains watermark

.It domains usage for websites

More than 92% .It domains successfully resolved to IP address during our test (resolving domain name is first step performed by your computer when opening website URL). Addresses of domain name (e.g. *domain.lt*), and *www* subdomain (e.g. www.domain.lt) were checked (any other subdomains, e.g. *some.domain.lt* where not analyzed).

Resolved .It domains



Less than 0,5% .It domain names have no name servers specified (which means they are not used for website or email).

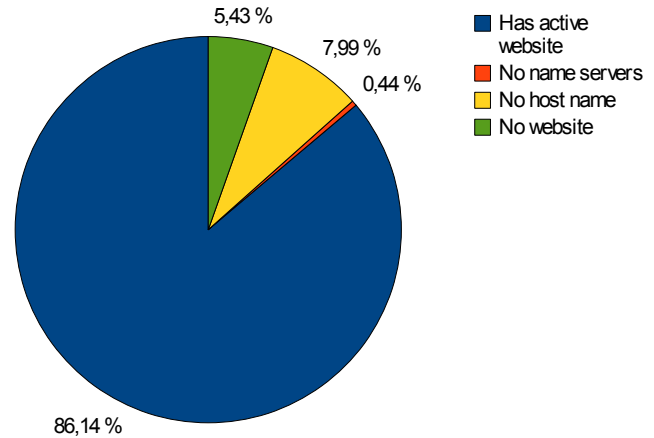
7,5% failed to be resolved (either due to misconfiguration or unreachable name servers).

Nearly 27% .It domains use synonyms (such domains, instead of pointing directly to server IP address, point to some other domain name). However, that is more of a technical peculiarity, and does not impact website much in practice.

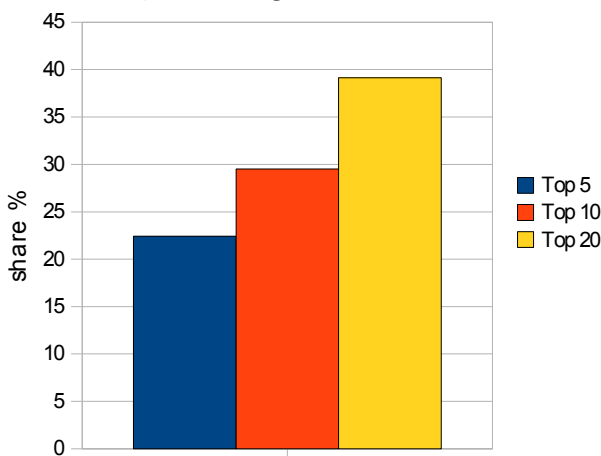
Rather high percentage (86%) of .It domains have active, reachable website.

A bit over 5% might be experiencing technical problems or do not use domain for website.

.It domains websites



Top hosting servers share

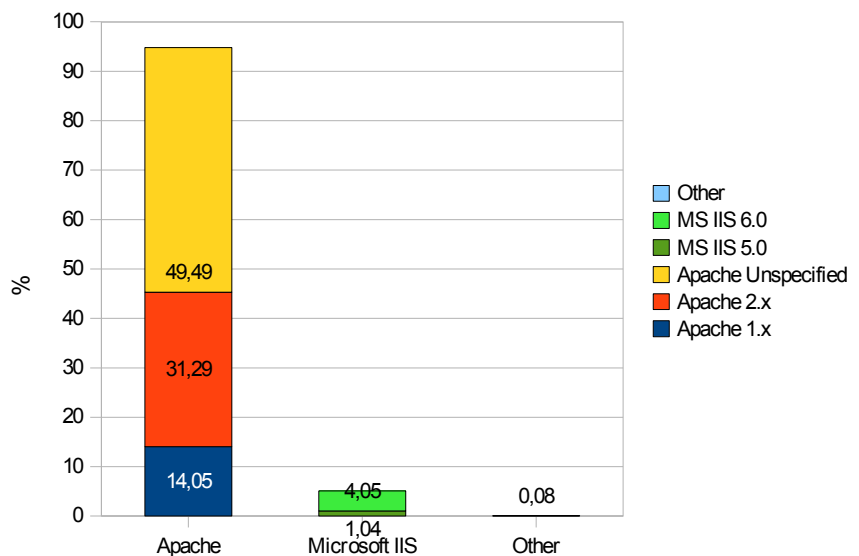


Top 20 web servers are hosting almost 40% .It domain names.

Almost 95% of websites under .It domain are served by *Apache* web server software. Only 5% web servers software identifies itself as *Microsoft IIS*.

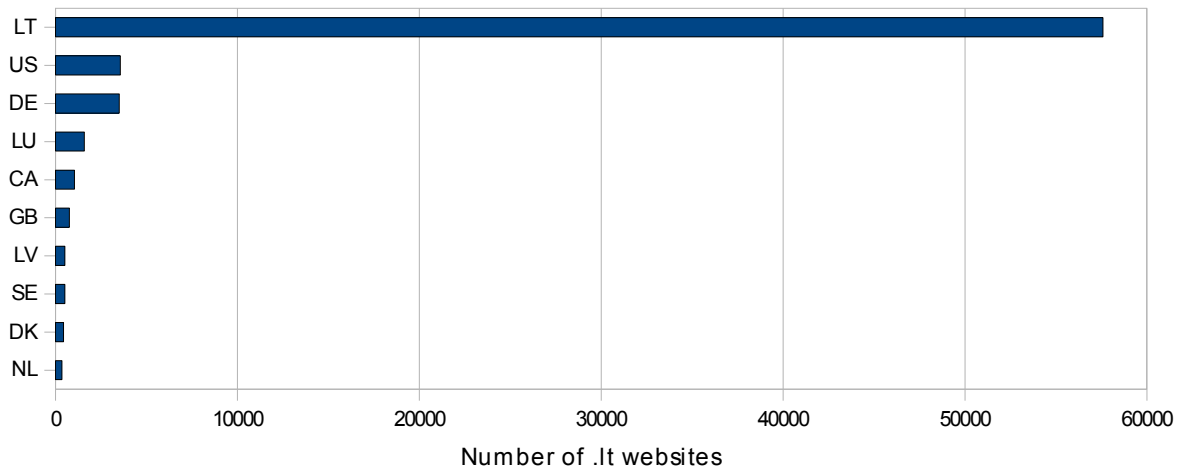
Alternative web servers software (such as *lighttpd*) are not popular choice for .It web hosting.

Webservers software market share



It's not surprising that most .lt domains websites are hosted on servers located in Lithuania. However, USA and Germany is popular choice too.

.lt websites by hosting country

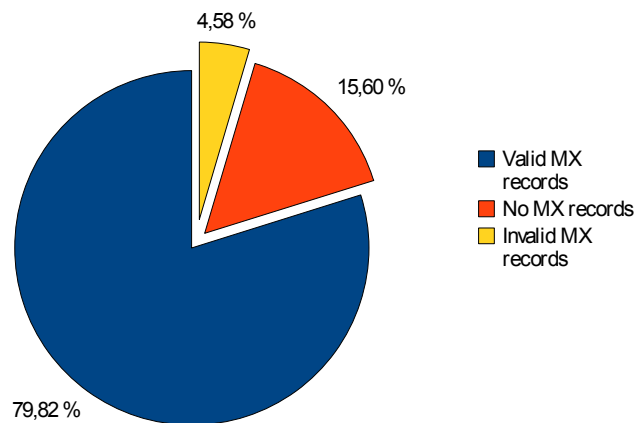


E-mail usage in .lt

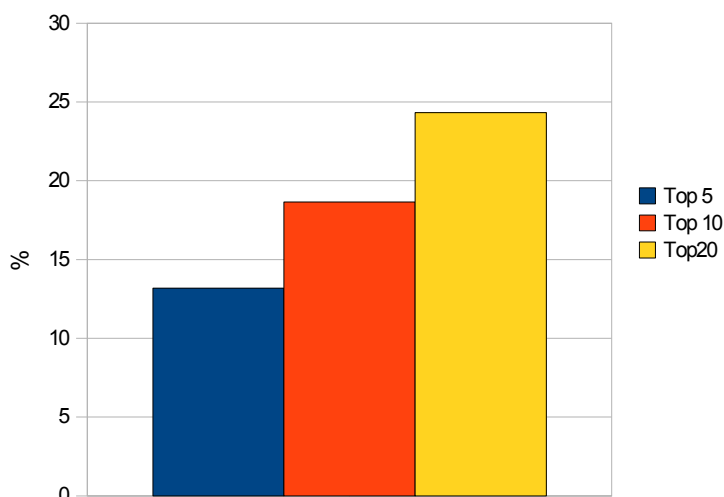
Around 80% percent of .lt domains contain MX (mail) DNS record (these are required if domain is accepting emails).

We've also found substantial amount of invalid MX records (e.g. pointing to *localhost*) these we have counted separately.

MX (mail) records in .lt domains



.lt domains mail servers distribution



Top 20 mail servers are handling incoming email of about 25% .lt domain names.